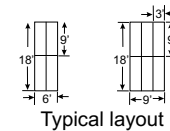
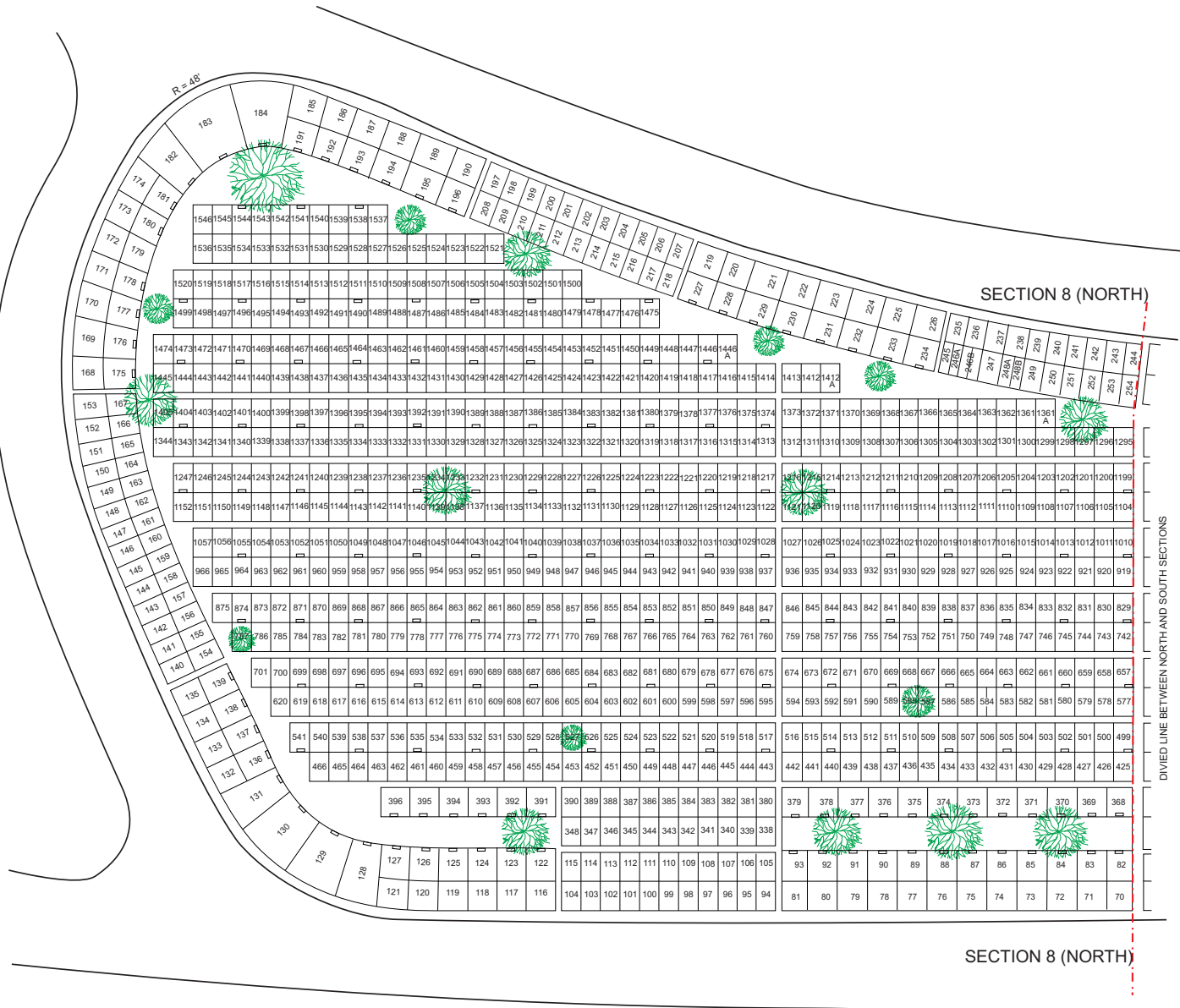
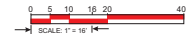


SECTION 8 (NORTH)



- NOTE
- 1) GRAVES ARE 3' X 9'
 - 2) Lots 6' x 9' or 9' x 9' lots (unless otherwise noted on the plan)
 - 3) ALL PATHS ARE 2' WIDE



Disclaimer: The information shown on this map is based on documents and information supplied by the client. Accuracy of images is not suitable for engineering purposes. topo2d plus assumes no responsibility for it's content.



SAINT MARY CEMETERY SECTION 8 (NORTH) Modif. August 2010 -JFB	
NOTE: The scale, grave location and measurements shown are for general reference use only. This is not a site surveyed document.	Scale: 1" = 16' Sheet 4 of 11
Copyright © 2008 by topoGraphix.com	